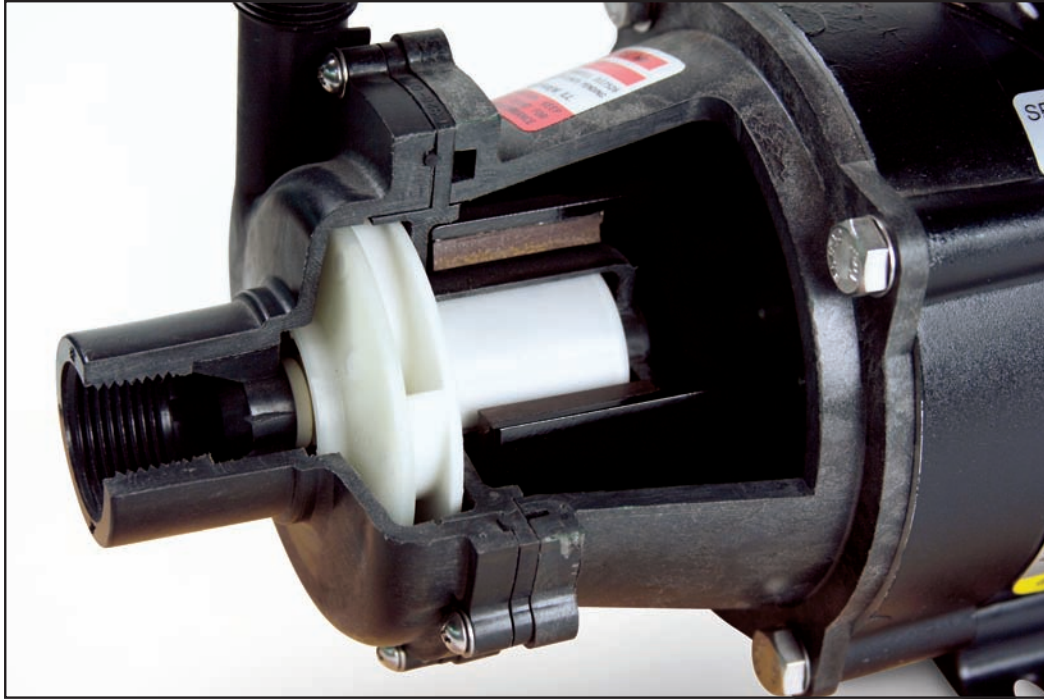




# MARCH PUMPS



**CENTRIFUGAL MAGNETIC DRIVE PUMPS**



## Why a magnetic drive pump?

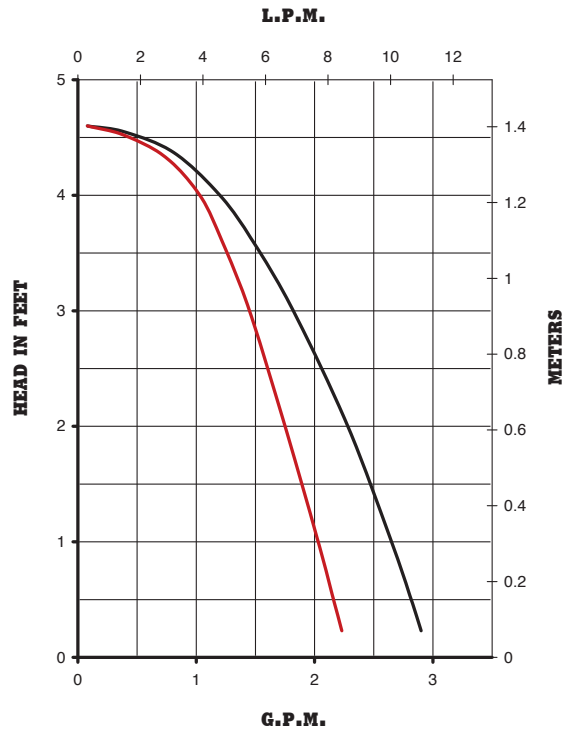
A magnetic drive pump is sealless, preventing any leakage that is normally associated with a conventional seal pump. Not only does the absence of a seal prevent the leakage of potentially dangerous and expensive liquids, it reduces maintenance time spent on the pump. In any magnetic drive pump, there are only two moving parts, the drive magnet and the impeller. With only two moving parts, there is little to break in the pump. The simpler the pump, the less chance there is for failure. A magnetic drive pump is your answer for a long life, dependable, reliable pump.

## Why a March magnetic drive pump?

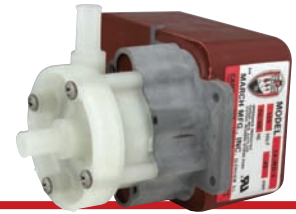
March has been manufacturing magnetic drive pumps outside of Chicago since 1963. With nearly half a century of experience, there are few applications that March hasn't encountered. Our pumps are available in a wide range of materials that ensure chemical compatibility, and if you have an application that requires a special pump, our engineering department is here to help. March is an US manufacturer, independently owned, and run by individuals with decades of engineering. **A March magnetic drive pump is a pump you can trust in.**

## Potential applications:

- Chemical Transfer
- Heat Transfer
- Computer cooling
- Refrigeration Systems
- Ice Makers
- Vending Equipment
- Kidney Dialysis
- Electrostatic Painting
- Carbon Arc Furnace Cooling
- Marine Air Conditioning Systems
- Hospital Thermal Blankets
- Microchip Manufacturing
- Aquariums
- Home Brewing
- Fountains
- Solar Systems



**MODEL 1A-MD-3/8**



**MODEL AC-1A-MD-1/2**



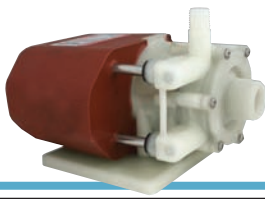
**MODEL AC-1A-MD**



# SERIES 1

SERIES 1	AC-1A-MD-3/8	AC-1A-MD-1/2	AC-1C-MD	1A-MD-3/8	1A-MD-1/2	1C-MD	1U-MD
<b>Max Flow</b>	2.3 GPM	3 GPM	3 GPM	2.3 GPM	3 GPM	3 GPM	3 GPM
<b>Max Head</b>	4.6 Feet	4.6 Feet	4.6 Feet	4.6 Feet	4.6 Feet	4.6 Feet	4.6 Feet
<b>Inlet</b>	3/8" OD	1/2" OD	1/4" MPT	3/8" OD	1/2" OD	1/4" MPT	Screen
<b>Outlet</b>	3/8" OD	1/2" OD	1/4" MPT	3/8" OD	1/2" OD	1/4" MPT	1/4" MPT
<b>HP</b>	1/200	1/200	1/200	1/200	1/200	1/200	1/200
<b>RPM</b>	3200	3200	3200	3200	3200	3200	3200
<b>Volts</b>	115 or 230	115 or 230	115 or 230	115 or 230	115 or 230	115 or 230	115 or 230
<b>Phase</b>	1	1	1	1	1	1	1
<b>Amps</b>	0.45 0.23	0.45 0.23	0.45 0.23	0.45 0.23	0.45 0.23	0.45 0.23	0.45 0.23
<b>Motor Type</b>	Air Cooled	Air Cooled	Air Cooled	TE/SUB	TE/SUB	TE/SUB	TE/SUB
<b>Elec. Connect.</b>	Leads	Leads	Leads	Cord	Cord	Cord	Cord
<b>Max Int. Press.</b>	50 PSI	50 PSI	50 PSI	50 PSI	50 PSI	50 PSI	50 PSI
<b>Max Liquid Temp.</b>	190 F	190 F	190 F	190F Open Air, 160F Sub	190F Open Air, 160F Sub	190F Open Air, 160F Sub	190F Open Air, 160F Sub
<b>Weight Packed</b>	2.3 lbs.	2.3 lbs.	2.3 lbs.	2.5 lbs.	2.5 lbs.	2.5 lbs.	2.5 lbs.
<b>Materials in Contact</b>	Polypropylene, Nylon, Buna N, 316 SS, Carbon/Teflon, Ceramic Magnet	Polypropylene, Nylon, Buna N, 316 SS, Carbon/Teflon, Ceramic Magnet	Polypropylene, Nylon, Buna N, 316 SS, Carbon/Teflon, Ceramic Magnet	Polypropylene, Nylon, Buna N, 316 SS, Carbon/Teflon, Ceramic Magnet	Polypropylene, Nylon, Buna N, 316 SS, Carbon/Teflon, Ceramic Magnet	Polypropylene, Nylon, Buna N, 316 SS, Carbon/Teflon, Ceramic Magnet *	Polypropylene, Nylon, Buna N, 316 SS, Carbon/Teflon, Ceramic Magnet *

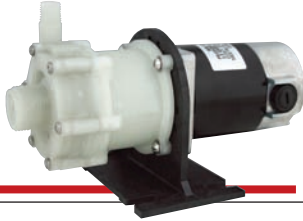
\*When submerged in solution, also in contact: epoxy, noryl, cycolac, delrin, cord



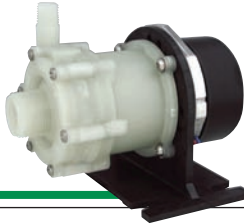
**MODEL LC-2CP-MD**



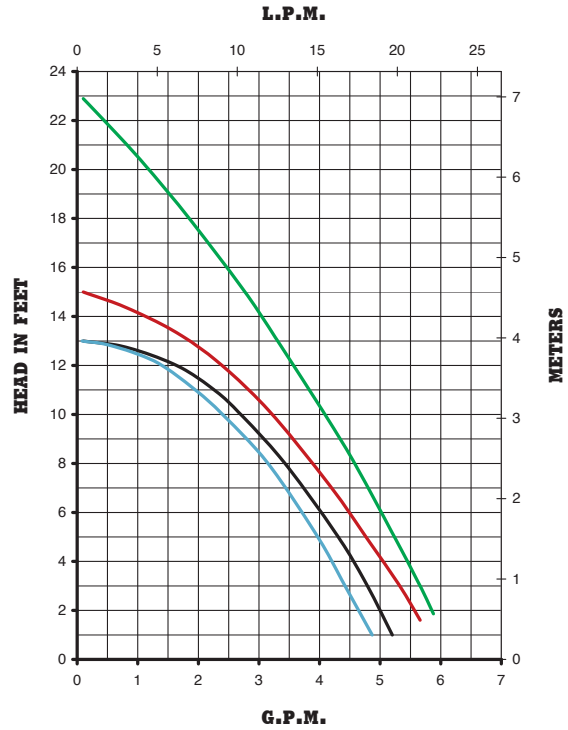
**MODEL AC-2CP-MD**



**MODEL BC-2CP-MD Brush**



**MODEL BC-2CP-MD Brushless**

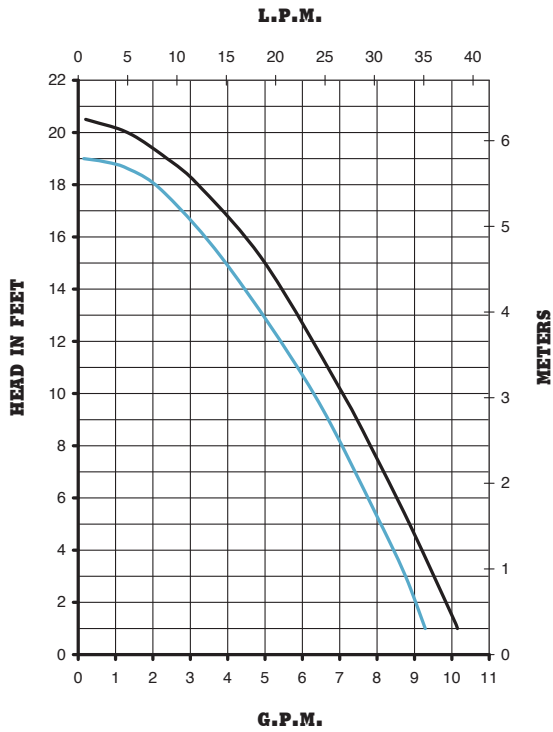


# SERIES 2

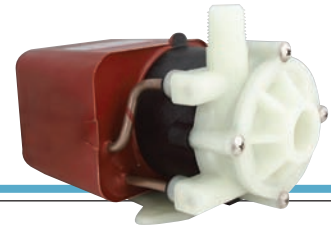
SERIES 2	2CP-MD	LC-2CP-MD	AC-2CP-MD	BC-2CP-MD	BC-2CP-MD Brush-Type	BC-2CP-MD Brushless
<b>Max Flow</b>	5 GPM	5 GPM	5 GPM	5 GPM	6 GPM	6 GPM
<b>Max Head</b>	13 Feet	13 Feet	13 Feet	13 Feet	15 Feet	23 Feet
<b>Inlet</b>	3/8" FPT and 3/4" MPT	3/8" FPT and 3/4" MPT	3/8" FPT and 3/4" MPT	3/8" FPT and 3/4" MPT	3/8" FPT and 3/4" MPT	3/8" FPT and 3/4" MPT
<b>Outlet</b>	1/4" MPT	1/4" MPT	1/4" MPT	1/4" MPT	1/4" MPT	1/4" MPT
<b>HP</b>	1/35	1/35	1/40	1/40	1/25	—
<b>RPM</b>	3450	3450	3450	3450	3450	3450
<b>Volts</b>	115 or 230	115 or 230	115 or 230	115 or 230	12V or 24V	12V (10-14) or 24V (20-28)
<b>Phase</b>	1	1	1	1	DC	DC
<b>Amps</b>	0.92 0.53	0.92 0.53	1.2 0.6	1.2 0.5	1.4 0.7	3.1 1.6
<b>Motor Type</b>	SUB Blue	TE/SUB Maroon	Air Cooled	Blast Cooled	Air Cooled	Air Cooled
<b>Elec. Connect.</b>	Cord	Cord	Cord	Cord	Leads	Leads
<b>Max Int. Press.</b>	50 PSI	25 PSI	50 PSI	50 PSI	50 PSI	50 PSI
<b>Max Liquid Temp.</b>	130 F	130 F	190 F	190 F	190 F	190 F
<b>Weight Packed</b>	5 lbs.	5 lbs.	4.5 lbs.	6.5 lbs.	4 lbs.	2 lbs.
<b>Materials in Contact</b>	Polypropylene, Ceramic, Viton, Stainless Steel, Ceramic Magnet ***	Polypropylene, Ceramic, Viton, Stainless Steel, Ceramic Magnet ***	Polypropylene, Ceramic, Viton, Ceramic Magnet *	Polypropylene, Ceramic, Viton *	Polypropylene, Ceramic, Viton *	Polypropylene, Ceramic, Viton *

\*Smooth inlet/outlet available

\*\*\*When submerged, also in contact: Epoxy, Buna N, and cord



**MODEL LC-3CP-MD**



**MODEL AC-3CP-MD**



**MODEL BC-3CP-MD**



**SERIES 3**

**SERIES 3**

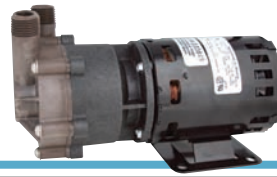
SERIES 3	LC-3CP-MD	AC-3CP-MD	BC-3CP-MD	BC-3K-MD
<b>Max Flow</b>	8.5 GPM	10 GPM	10 GPM	10 GPM
<b>Max Head</b>	19 Feet	20.5 Feet	20.5 Feet	20.5 Feet
<b>Inlet</b>	3/4" FPT	3/4" FPT	3/4" FPT	3/4" FPT
<b>Outlet</b>	1/2" MPT	1/2" MPT	1/2" MPT	1/2" MPT
<b>HP</b>	1/20	1/15	1/15	1/15
<b>RPM</b>	3450	3450	3450	3450
<b>Volts</b>	115 or 230	115 or 230	115 or 230	115 or 230
<b>Phase</b>	1	1	1	1
<b>Amps</b>	2.0 1.0	2.3 0.9	2.1 0.9	2.1 0.9
<b>Motor Type</b>	TE/SUB Maroon	Air Cooled	Blast Cooled	Blast Cooled
<b>Elec. Connect.</b>	Cord	Leads	Leads	Leads
<b>Max Int. Press.</b>	25 PSI	50 PSI	50 PSI	75 PSI
<b>Max Liquid Temp.</b>	130 F	190 F	190 F	200 F
<b>Weight Packed</b>	8.5 lbs.	7 lbs.	8 lbs.	8 lbs.
<b>Materials in Contact</b>	Polypropylene, Epoxy, Cupric Nickel, Buna N, Ceramic Magnet	Polypropylene, Ceramic Magent, Ceramic, Buna N *	Polypropylene, Ceramic, Ceramic, Viton *	Kynar, Ceramic, Viton *

\*Smooth inlet/outlet available





**MODEL MDXT-3**



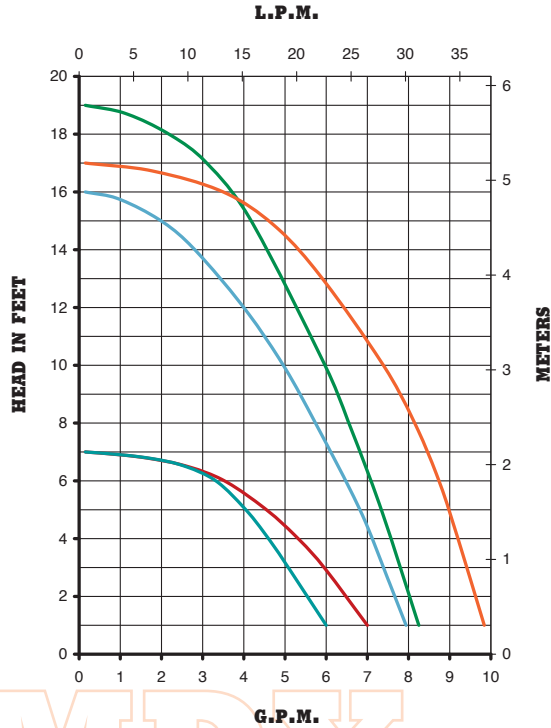
**MODEL MDX-MT3**



**MODEL MDX-3-1/2**



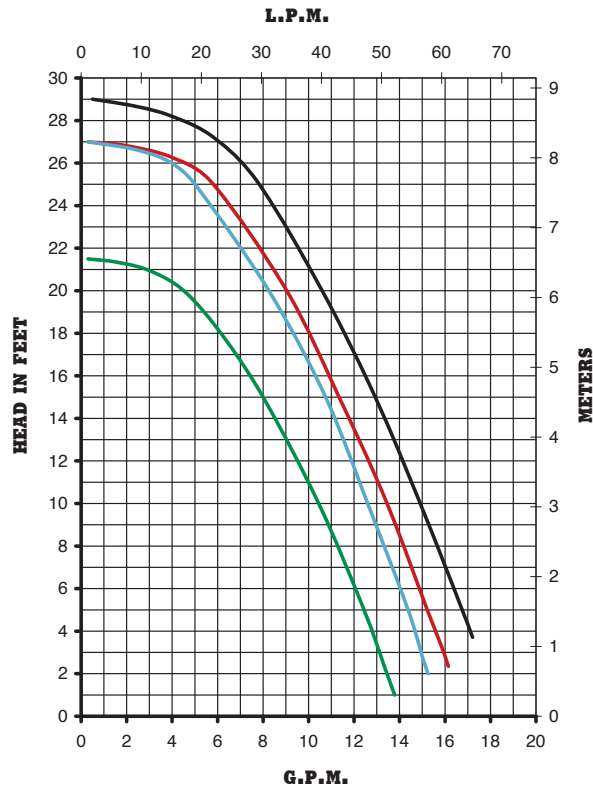
**MODEL TE-MDK-MT3**



SERIES MDX	MDX-1/2	MDX-5/8	MDXT
<b>Max Flow</b>	6 GPM	6 GPM	7 GPM
<b>Max Head</b>	7 Feet	7 Feet	7 Feet
<b>Inlet</b>	1/2" OD	5/8" OD	1/2" FPT
<b>Outlet</b>	1/2" OD	5/8" OD	3/8" MPT
<b>HP</b>	1/55	1/55	1/55
<b>RPM</b>	1750	1750	1750
<b>Volts</b>	115 or 230	115 or 230	115 or 230
<b>Phase</b>	1	1	1
<b>Amps</b>	.94 .45	.94 .45	.94 .45
<b>Motor Type</b>	Air Cooled	Air Cooled	Air Cooled
<b>Elec. Connect.</b>	Cord	Cord	Cord
<b>Max Int. Press.</b>	50 PSI	50 PSI	50 PSI
<b>Max Liquid Temp.</b>	190 F	190 F	190 F
<b>Weight Packed</b>	5.5 lbs.	5.5 lbs.	5.5 lbs.
<b>Materials in Contact</b>	Polypropylene, Kynar, Buna N, Ceramic Magnet	Polypropylene, Kynar, Buna N, Ceramic Magnet	Polypropylene, Ceramic Shaft & Thrust Washer, Buna N, Ceramic Magnet



SERIES MDX	MDXT-3	MDX-3 1/2	MDX-3 5/8	MDX-MT3	MDK-MT3	TE-MDX-MT3	TE-MDK-MT3
<b>Max Flow</b>	8.5 GPM	8.5 GPM	8.5 GPM	8 GPM	8 GPM	10 GPM	10 GPM
<b>Max Head</b>	19 Feet	19 Feet	19 Feet	16 Feet	16 Feet	17 Feet	17 Feet
<b>Inlet</b>	1/2" FPT	1/2" OD	5/8" OD	1/2" MPT	1/2" MPT	1/2" MPT	1/2" MPT
<b>Outlet</b>	3/8" FPT	1/2" OD	5/8" OD	1/2" MPT	1/2" MPT	1/2" MPT	1/2" MPT
<b>HP</b>	1/25	1/25	1/25	1/25	1/25	1/15	1/15
<b>RPM</b>	3450	3450	3450	3450	3450	3450	3450
<b>Volts</b>	115 or 230	115 or 230	115 or 230	115 or 230	115 or 230	115 or 230	115 or 230
<b>Phase</b>	1	1	1	1	1	1	1
<b>Amps</b>	1.55 .7	1.55 .7	1.55 .7	1.35 0.85	1.35 0.85	1.0 / .5	1.0 / .5
<b>Motor Type</b>	Air Cooled	Air Cooled	Air Cooled	Air Cooled	Air Cooled	TEFC	TEFC
<b>Elec. Connect.</b>	Cord	Cord	Cord	Cord	Cord	Conduit Box	Conduit Box
<b>Max Int. Press.</b>	50 PSI	50 PSI	50 PSI	75 PSI	75 PSI	75 PSI	75 PSI
<b>Max Liquid Temp.</b>	190 F	190 F	190 F	200 F	200 F	200 F	200 F
<b>Weight Packed</b>	6 lbs.	6 lbs.	6 lbs.	6.5 lbs.	6.5 lbs.	10 lbs.	10 lbs.
<b>Materials in Contact</b>	Polypropylene, Ceramic Shaft & Thrust Washer, Buna N, Ceramic Magnet	Polypropylene, Kynar, Ryton/ Teflon/Carbon, Stainless Steel, Buna N, Ceramic Magnet	Polypropylene, Kynar, Ryton/ Teflon/Carbon, Stainless Steel, Buna N, Ceramic Magnet	Ryton, Ceramic, Viton	Kynar, Ceramic, Viton	Ryton, Ceramic, Viton	Kynar, Ceramic, Viton



**MODEL AC-4C-MD**



**MODEL AC-5C-MD**



**MODEL TE-5K-MD**



**MODEL TE-5S-MD**



# SERIES 4 & 5

SERIES 4 & 5	AC-4C-MD	BC-4C-MD	5C-MD	LC-5C-MD	AC-5C-MD	TE-5C-MD	TE-5K-MD	TE-5S-MD
<b>Max Flow</b>	14 GPM	14 GPM	14.5 GPM	14.5 GPM	17 GPM	18 GPM	18 GPM	18 GPM
<b>Max Head</b>	21.5 Feet	21.5 Feet	27 Feet	27 Feet	27 Feet	29 Feet	29 Feet	29 Feet
<b>Inlet</b>	1" FPT	1" FPT	1" FPT	1" FPT	1" FPT	1" FPT	1" FPT	1" FPT
<b>Outlet</b>	1/2" MPT	1/2" MPT	1/2" MPT	1/2" MPT	1/2" MPT	1/2" MPT	1/2" MPT	1/2" MPT
<b>HP</b>	1/12	1/10	1/8	1/8	1/8	1/5	1/5	1/5
<b>RPM</b>	3450	3450	3450	3450	3450	3450	3450	3450
<b>Volts</b>	115 or 230	115 or 230	115 or 230	115 or 230	115 or 230	115 or 230	115 or 230	115 or 230
<b>Phase</b>	1	1	1	1	1	1	1	1
<b>Amps</b>	1.75 .75	1.9 0.75	1.6 0.9	1.6 0.9	2.1 1	2.1 1.05	2.1 1.05	2.1 1.05
<b>Motor Type</b>	Air Cooled	Blast Cooled	SUB Blue	TE/SUB Maroon	Air Cooled	TEFC	TEFC	TEFC
<b>Elec. Connect.</b>	Cord	Cord	Cord	Cord	Cord	Conduit Box	Conduit Box	Conduit Box
<b>Max Int. Press.</b>	50 PSI	50 PSI	50 PSI	50 PSI	50 PSI	50 PSI	75 PSI	200 PSI
<b>Max Liquid Temp.</b>	190 F	190 F	130 F	130 F	190 F	190 F	200 F	250 F
<b>Weight Packed</b>	8.5 lbs.	8.5 lbs.	18 lbs.	18 lbs.	9.5 lbs.	15.5 lbs.	15.5 lbs.	18 lbs.
<b>Materials in Contact</b>	Polypropylene, Ceramic, Ceramic Magnet, Buna N *	Polypropylene, Ceramic, Viton *	Stainless Steel, Epoxy, Polypropylene, Ceramic Magnet, Buna N, Cord	Polypropylene, Ceramic, Buna N, Stainless Steel, Ceramic Magnet	Polypropylene, Ceramic, Buna N, Ceramic Magnet *	Polypropylene, Ceramic, Viton *	Carbon/Kynar, Ceramic, Viton	316 Stainless, Viton, Ceramic, Carbon Bushing

\*Smooth inlet/outlet available



**MODEL TE-5.5C-MD-AC**



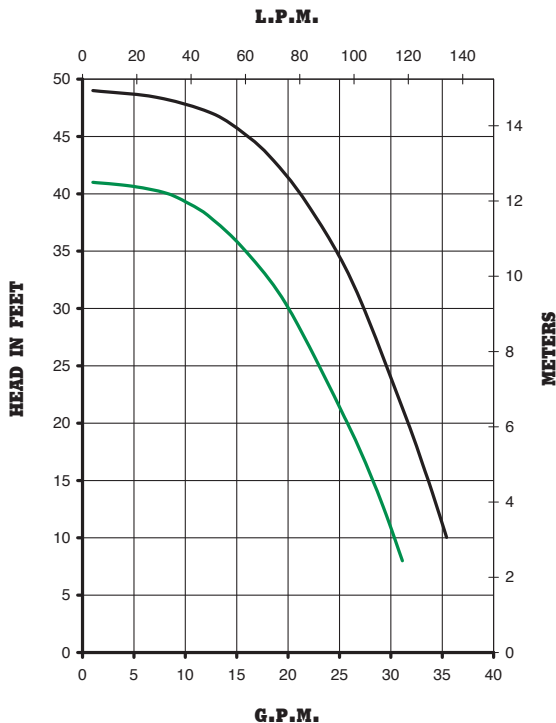
**MODEL TE-5.5C-MD**



**MODEL TE-5.5S-MD**



**MODEL TE-6T-MD**

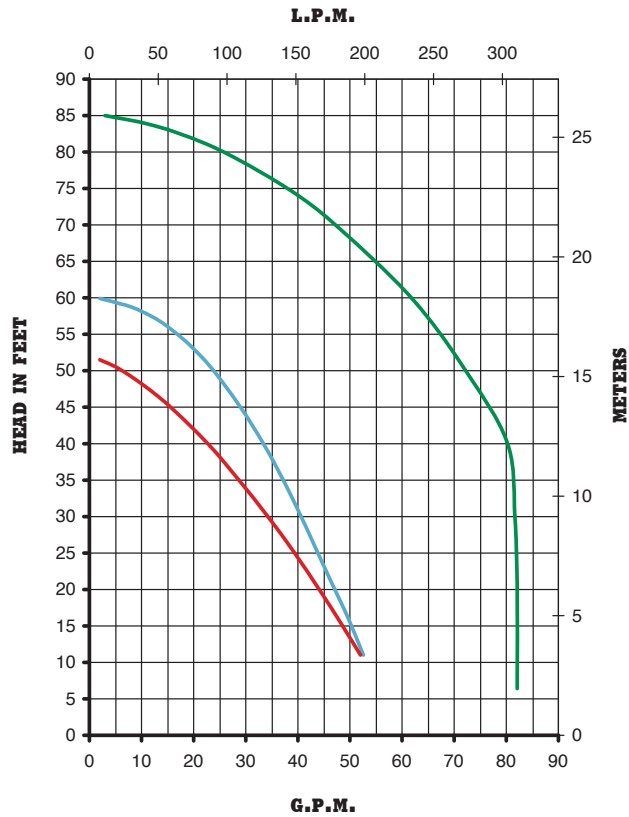


# SERIES 5.5 & 6

SERIES 5.5 & 6	TE-5.5C-MD	TE-5.5K-MD	TE-5.5S-MD	TE-6T-MD	TE-6K-MD
<b>Max Flow</b>	30 GPM	30 GPM	30 GPM	38 GPM	38 GPM
<b>Max Head</b>	41 FT	41 FT	41 FT	49 FT	49 FT
<b>Inlet</b>	1" FPT	1" FPT	1" FPT	1" FPT	1" FPT
<b>Outlet</b>	3/4" MPT	3/4" MPT	3/4" MPT	3/4" MPT	3/4" MPT
<b>HP</b>	1/3	1/3	1/3	1/2	1/2
<b>RPM</b>	3450	3450	3450	3450	3450
<b>Volts</b>	115/230 or 230/460	115/230 or 230/460	115/230 or 230/460	115/230 or 230/460	115/230 or 230/460
<b>Phase</b>	1 or 3	1 or 3	1 or 3	1 or 3	1 or 3
<b>Amps</b>	1 (4.4/2.2) 3 (1.2/.6)	1 (4.4/2.2) 3 (1.2/.6)	1 (4.4/2.2) 3 (1.2/.6)	1 (7.4/3.7) 3 (1.5/.7)	1 (7.4/3.7) 3 (1.5/.7)
<b>Motor Type</b>	TEFC	TEFC	TEFC	TEFC	TEFC
<b>Elec. Connect.</b>	Conduit Box	Conduit Box	Conduit Box	Conduit Box	Conduit Box
<b>Max Int. Press.</b>	50 PSI	75 PSI	200 PSI	50 PSI	75PSI
<b>Max Liquid Temp.</b>	190 F	200 F	250 F	190 F	200 F
<b>Weight Packed</b>	34.5 lbs.	35 lbs.	39 lbs.	34.5 lbs.	34.5 lbs.
<b>Materials in Contact</b>	Polypropylene, Ceramic, Viton *	Kynar, Ceramic, Viton *	316 Stainless Steel, Viton, Ceramic, Carbon Bushing	Polypropylene, Ryton, Ceramic, Viton, Teflon/ Ryton/Carbon Bushing **	Kynar, Ceramic, Viton, Carbon Bushing **

\*Air Cooled motor available  
\*\*Drip Proof motor available





**MODEL TE-7R-MD**



**MODEL TE-7S-MD**



**MODEL SP-TE-7K-MD**



**MODEL TE-7.5K-MD**

# SERIES 7 & 7.5

SERIES 7 & 7.5	TE-7R-MD	TE-7K-MD	TE-7S-MD	SP-TE-7P-MD	SP-TE-7K-MD	TE-7.5P-MD	TE-7.5K-MD
<b>Max Flow</b>	53 GPM	53 GPM	53 GPM	53 GPM	53 GPM	82 GPM	82 GPM
<b>Max Head</b>	60 FT	60 FT	57.5 FT	52 FT	52 FT	85 FT	85 FT
<b>Inlet</b>	1 1/2" FPT	1 1/2" FPT	1 1/2" FPT	1 1/2" FPT	1 1/2" FPT	2" MPT	2" MPT
<b>Outlet</b>	1" MPT	1" MPT	1" MPT	1" MPT	1" MPT	1 1/2" MPT	1 1/2" MPT
<b>HP</b>	3/4	3/4	1	1	1	2	2
<b>RPM</b>	3450	3450	3450	3450	3450	3450	3450
<b>Volts</b>	115/230 or 230/460	115/230 or 230/460	115/230 or 230/460	115/230 or 230/460	115/230 or 230/460	230/460	230/460
<b>Phase</b>	1 or 3	1 or 3	1 or 3	1 or 3	1 or 3	3	3
<b>Amps</b>	1 (9.7/4.9) 3 (2.2/1.1)	1 (9.7/4.9) 3 (2.2/1.1)	1 (11.8/5.9) 3 (3/1.5)	1 (11.8/5.9) 3 (3/1.5)	1 (11.8/5.9) 3 (3/1.5)	5.4, 2.7	5.4, 2.7
<b>Motor Type</b>	TEFC	TEFC	TEFC	TEFC	TEFC	TEFC	TEFC
<b>Elec. Connect.</b>	Conduit Box	Conduit Box	Conduit Box	Conduit Box	Conduit Box	Conduit Box	Conduit Box
<b>Max Int. Press.</b>	50 PSI	75 PSI	200 PSI	50 PSI	50PSI	60 PSI	60 PSI
<b>Max Liquid Temp.</b>	190 F	200 F	250 F	190 F	190 F	190 F	190 F
<b>Weight Packed</b>	38.5 lbs.	38.5 lbs.	49.5 lbs.	57 lbs.	57 lbs.	53 lbs.	53 lbs.
<b>Suction Lift</b>	0	0	0	12 Feet	12 Feet	0	0
<b>Materials in Contact</b>	Polypropylene, Ryton, Ceramic, Ryton/Teflon/Carbon/Bushing, Viton  *Available with 1HP motor	Carbon Filled Kynar, Carbon Bushing, Viton  *Available with 1HP motor	316 Stainless Steel, Ceramic, Carbon Bushing, Viton	Polypropylene, Ceramic, Carbon Bushing, Viton	Carbon Filled Kynar, Ceramic, Carbon Bushing, Viton	Polypropylene, Ceramic, Carbon Bushing, Viton	Natural Kynar, Ceramic, Carbon Bushing, Viton





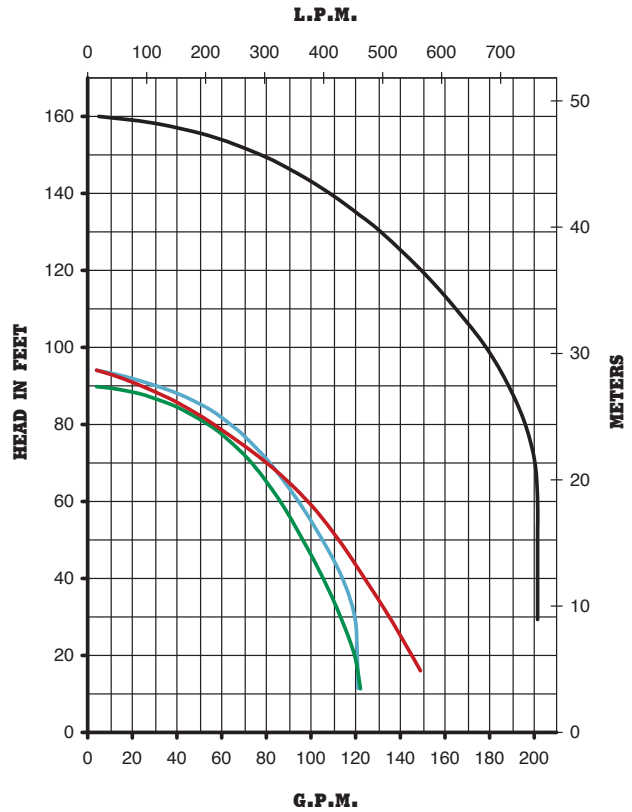
**MODEL TE-8C-MD**



**MODEL TE-8S-MD**



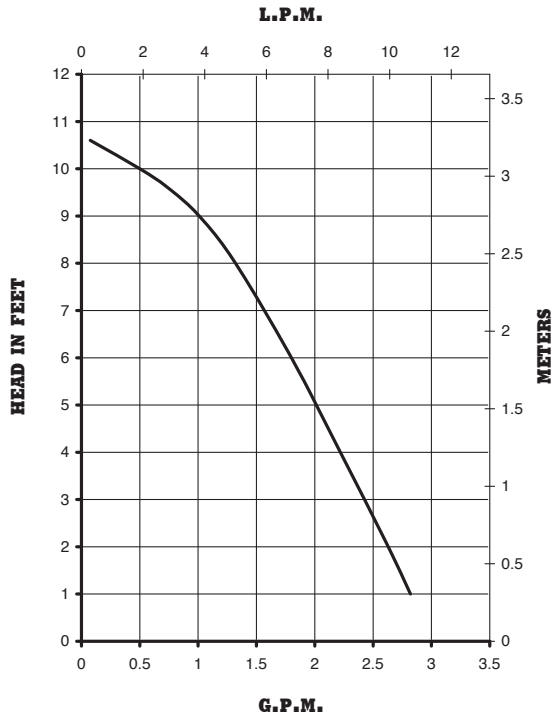
**MODEL TE-10K-MD**



# SERIES 8 & 10

SERIES 8 & 10	TE-8C-MD	TE-8K-MD	TE-8S-MD	TE-8C-MD-HF	TE-8K-MD-HF	TE-10K-MD
<b>Max Flow</b>	120 GPM	120 GPM	120 GPM	150 GPM	150 GPM	200 GPM
<b>Max Head</b>	95 Feet	95 Feet	90 Feet	95 Feet	95 Feet	160 Feet
<b>Inlet</b>	2" MPT	2" MPT	2" MPT	2" MPT	2" MPT	3" MPT
<b>Outlet</b>	1 1/2" MPT	1 1/2" MPT	1 1/2" MPT	1 1/2" MPT	1 1/2" MPT	2" MPT
<b>HP</b>	3	3	5	5	5	10
<b>RPM</b>	3450	3450	3450	3450	3450	3450
<b>Volts</b>	230/460	230/460	230/460	230/460	230/460	230/460
<b>Phase</b>	3	3	3	3	3	3
<b>Amps</b>	7.8 3.9	7.8 3.9	12.6 6.3	12.6 6.3	12.6 6.3	22.8 11.4
<b>Motor Type</b>	TEFC	TEFC	TEFC	TEFC	TEFC	TEFC
<b>Elec. Connect.</b>	Conduit Box	Conduit Box	Conduit Box	Conduit Box	Conduit Box	Conduit Box
<b>Max Int. Press.</b>	50 PSI	75 PSI	200 PSI	50 PSI	75 PSI	75 PSI
<b>Max Liquid Temp.</b>	190 F	200 F	250 F	190 F	200 F	190 F
<b>Weight Packed</b>	160 lbs.	160 lbs.	180 lbs.	170 lbs.	170 lbs.	260 lbs.
<b>Materials in Contact</b>	Polypropylene, Carbon Filled Kynar, Viton, Teflon/Ryton/Carbon Bushing, Ceramic *	Carbon Filled Kynar, Ceramic, Viton, Carbon Bushing *	316 Stainless Steel, Viton, Ceramic, Carbon Bushing	Polypropylene, Carbon Filled Kynar, Viton, Teflon/Ryton/Carbon Bushing, Ceramic	Carbon Filled Kynar, Ceramic, Viton, Carbon Bushing	Carbon Filled Kynar, Ceramic, Viton, Carbon Bushing

\*Available with 5HP Motor



**MODEL 893-04**



**MODEL 893-07**

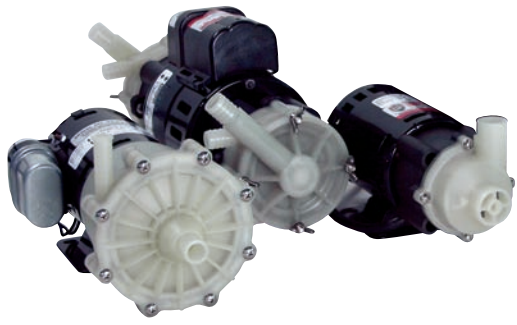


**MODEL 893-09**



# SERIES 893

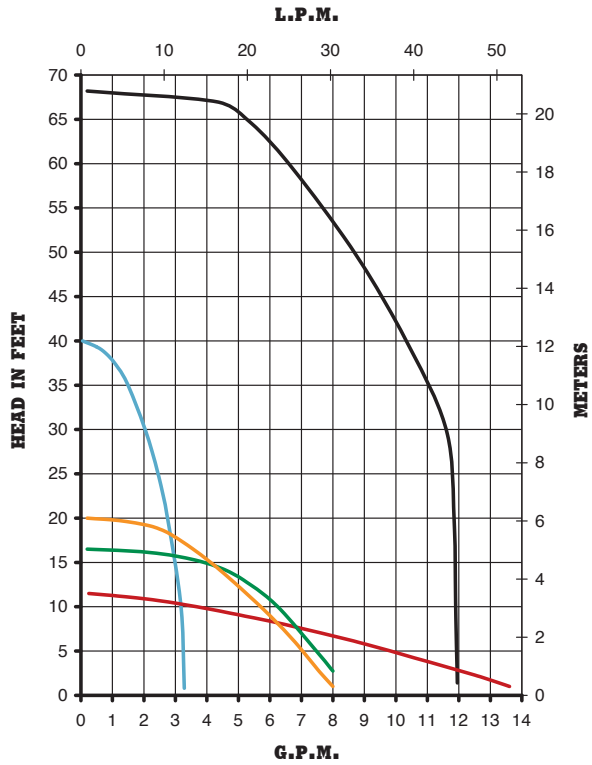
SERIES 893	893-03 Brush-Type	893-04 Brush-Type	893-05 Brush-Type	893-06 Brush-Type	893-07 Brushless	893-08 Brushless	893-09 Brushless	893-10 Brushless
<b>Max Flow</b>	2.7 GPM	2.7 GPM	2.7 GPM	2.7 GPM	2.7 GPM	2.7 GPM	2.7 GPM	2.7 GPM
<b>Max Head</b>	10.6 Feet	10.6 Feet	10.6 Feet	10.6 Feet	10.6 Feet	10.6 Feet	10.6 Feet	10.6 Feet
<b>Inlet</b>	3/8" FPT	3/8" FPT	3/8" FPT	3/8" FPT	3/8" FPT	3/8" FPT	3/8" FPT	3/8" FPT
<b>Outlet</b>	3/8" OD	3/8" OD	3/8" OD	3/8" OD	3/8" OD	3/8" OD	3/8" OD	3/8" OD
<b>HP</b>	1/150	1/150	1/150	1/150	1/150	1/150	1/150	1/150
<b>RPM</b>	4000	4000	4000	4000	4000	4000	4000	4000
<b>Volts</b>	12	12	24	24	12(7-14)	24(12-26)	12(7-14)	24(12-26)
<b>Phase</b>	DC	DC	DC	DC	DC	DC	DC	DC
<b>Amps</b>	1	1	.05	.05	1	.05	1	.05
<b>Motor Type</b>	Air Cooled	SUB	Air Cooled	SUB	Air Cooled	Air Cooled	TE/SUB	TE/SUB
<b>Elec. Connect.</b>	Leads	Leads	Leads	Leads	Leads	Leads	Leads	Leads
<b>Max Int. Press.</b>	50 PSI	50 PSI	50 PSI	50 PSI	50 PSI	50 PSI	50 PSI	50 PSI
<b>Max Liquid Temp.</b>	190 F	160F SUB	190 F	160F SUB	190 F	190 F	190F Open Air, 130F SUB	190F Open Air, 130F SUB
<b>Weight Packed</b>	1 lbs.	1.2 lbs.	1 lbs.	1.2 lbs.	1 lbs.	1 lbs.	1.2 lbs.	1.2 lbs.
<b>Materials in Contact</b>	Noryl, Nylon, Buna N, 316 Stainless Steel, Ceramic Magnet, Delrin, Epoxy and Motor Leads	Noryl, Nylon, Buna N, 316 Stainless Steel, Ceramic Magnet, Delrin, Epoxy and Motor Leads	Noryl, Nylon, Buna N, 316 Stainless Steel, Ceramic Magnet, Delrin, Epoxy and Motor Leads	Noryl, Nylon, Buna N, 316 Stainless Steel, Ceramic Magnet, Delrin, Epoxy and Motor Leads	Noryl, Nylon, Buna N, 316 Stainless Steel, Ceramic Magnet, Delrin, Epoxy and Motor Leads	Noryl, Nylon, Buna N, 316 Stainless Steel, Ceramic Magnet, Delrin, Epoxy and Motor Leads	Noryl, Nylon, Buna N, 316 Stainless Steel, Ceramic Magnet, Delrin, Epoxy and Motor Leads	Noryl, Nylon, Buna N, 316 Stainless Steel, Ceramic Magnet, Delrin, Epoxy and Motor Leads



MODEL 320CP-MD, MODEL 851 Dual Head, MODEL 140



MODEL 335CP-MD, MODEL 802 Dual Head

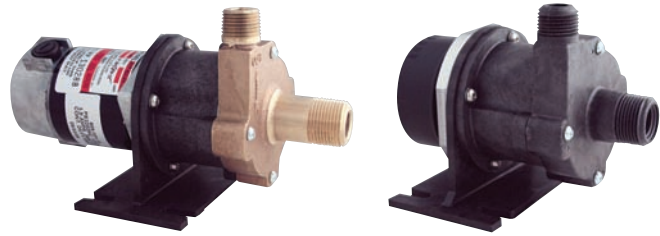


# 320, 335, 140, 802, 851

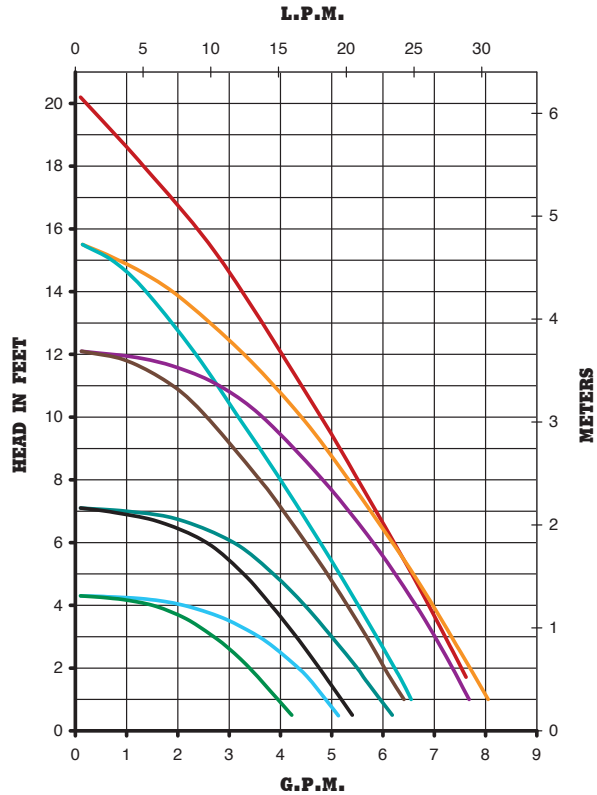
SERIES 320, 335, 140, 802, 851	320CP-MD	335CP-MD	140	802 Dual Head	851 Dual Head
<b>Max Flow</b>	3.3 GPM	12 GPM	12.5 GPM	8 GPM	8 GPM
<b>Max Head</b>	40 Feet	68 Feet	11.5 Feet	16.5 Feet	20 Feet
<b>Inlet</b>	1/2" MPT	3/4" MPT	1 1/8" OD	1/2" OD	5/8" OD
<b>Outlet</b>	3/8" MPT	3/4" MPT	7/8" OD	1/2" OD	5/8" OD
<b>HP</b>	1/12	1/3	1/20	1/8	1/8
<b>RPM</b>	3450	3450	3450	3450	3450
<b>Volts</b>	115 or 230	115/230 230/460	115 or 230	230	230
<b>Phase</b>	1	1 or 3	1	1	1
<b>Amps</b>	1.75 .75	4.4/2.2 1.2/0.6	1.3 .69	.84	.79
<b>Motor Type</b>	Air Cooled	TEFC	Air Cooled	Air Cooled	Air Cooled
<b>Elec. Connect.</b>	Cord	Conduit Box	Leads	Leads	Leads
<b>Max Int. Press.</b>	50 PSI	50 PSI	50 PSI	50 PSI	50 PSI
<b>Max Liquid Temp.</b>	190 F	190 F	190 F	190 F	190 F
<b>Weight Packed</b>	10 lbs.	21 lbs.	6 lbs.	10.5 lbs.	12 lbs.
<b>Materials in Contact</b>	Polypropylene, Ceramic, Viton *	Polypropylene, Ceramic, Viton *	Polypropylene, Buna N, Ceramic Magnet, Ceramic	Polypropylene, Kynar Carbon Filled, Ryton/Teflon/Carbon, Ethylene Propylene, Ceramic Magnet, 316 Stainless Steel	Polypropylene, Viton, Ceramic Magnet, Ceramic

\*Smooth Inlet/Outlet available

# 809

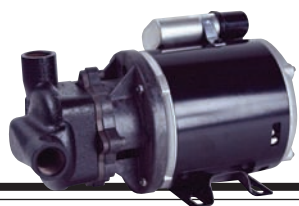


SERIES 809	809-PL	809-BR-C
<b>Max Flow</b>	4.3 GPM	5 GPM
<b>Max Head</b>	4.3 Feet	4.3 Feet
<b>Inlet</b>	1/2" MPT	3/4" MPT
<b>Outlet</b>	1/2" MPT	1/2" MPT
<b>HP</b>	1/100	1/100
<b>RPM</b>	1750	1750
<b>Volts</b>	115 or 230	115 or 230
<b>Phase</b>	1	1
<b>Amps</b>	.5 .17	.94 .45
<b>Motor Type</b>	Air Cooled	Air Cooled
<b>Elec. Connect.</b>	Conduit Box	Conduit Box
<b>Max Int. Press.</b>	50 PSI	150 PSI
<b>Max Liquid Temp.</b>	250 F	250 F
<b>Weight Packed</b>	5 lbs.	6 lbs.
<b>Materials in Contact</b>	Polysulfone, Stainless Steel, Teflon, Silicone, Ryton/Teflon/Carbon *	Bronze, Stainless Steel, Teflon, Silicone, Ryton/Teflon/Carbon **



SERIES 809	809-PL Brush-Type	809-BR-C Brush-Type	809-PL-HS	809-BR-HS-C	809-BR-HS-C Brush-Type	809-PL-HS-C Brush-Type	809-PL-HS-C Brushless
<b>Max Flow</b>	5 GPM	6 GPM	6 GPM	7.5 GPM	6 GPM	8 GPM	7.5 GPM
<b>Max Head</b>	7.1 Feet	7.1 Feet	12.1 Feet	12.1 Feet	15.5 Feet	15.5 Feet	20.2 Feet
<b>Inlet</b>	1/2" MPT	3/4" MPT	1/2" MPT	3/4" MPT	1/2" MPT	3/4" MPT	3/8" FPT & 3/4" MPT
<b>Outlet</b>	1/2" MPT	1/2" MPT	1/2" MPT	1/2" MPT	1/2" MPT	1/2" MPT	1/2" MPT
<b>HP</b>	1/100	1/100	1/25	1/25	1/25	1/25	-
<b>RPM</b>	1850	1850	3450	3450	3450	3450	3450
<b>Volts</b>	12 or 24	12 or 24	115 or 230	115 or 230	12 or 24	12 or 24	12 (10-14) or 24 (20-28)
<b>Phase</b>	DC	DC	1	1	DC	DC	DC
<b>Amps</b>	1.1 .55	1.1 .55	1.4 .7	1.4 .7	3.5 1.8	3.5 1.8	3.1 1.6
<b>Motor Type</b>	Air Cooled	Air Cooled	Air Cooled	Air Cooled	Air Cooled	Air Cooled	Air Cooled
<b>Elec. Connect.</b>	Leads	Leads	Conduit Box	Cord	Leads	Leads	Leads
<b>Max Int. Press.</b>	50 PSI	150 PSI	50 PSI	150 PSI	50 PSI	150 PSI	50 PSI
<b>Max Liquid Temp.</b>	250 F	250 F	250 F	250 F	250 F	250 F	250 F
<b>Weight Packed</b>	4.5 lbs.	5.5 lbs.	5 lbs.	6 lbs.	4.5 lbs.	5.5 lbs.	4 lbs.
<b>Materials in Contact</b>	Polysulfone, Stainless Steel, Teflon, Silicone, Ryton/Teflon/Carbon *	Bronze, Stainless Steel, Teflon, Silicone, Ryton/Teflon/Carbon **	Polysulfone, Stainless Steel, Teflon, Silicone, Ryton/Teflon/Carbon *	Bronze, Stainless Steel, Teflon, Silicone, Ryton/Teflon/Carbon **	Polysulfone, Stainless Steel, Teflon, Silicone, Ryton/Teflon/Carbon *	Bronze, Stainless Steel, Teflon, Silicone, Ryton/Teflon/Carbon **	Polysulfone, Stainless Steel, Teflon, Silicone, Ryton/Teflon/Carbon **

\*Available in Polysulfone and Bronze  
 \*\* Available in Polysulfone, Bronze, and Stainless Steel



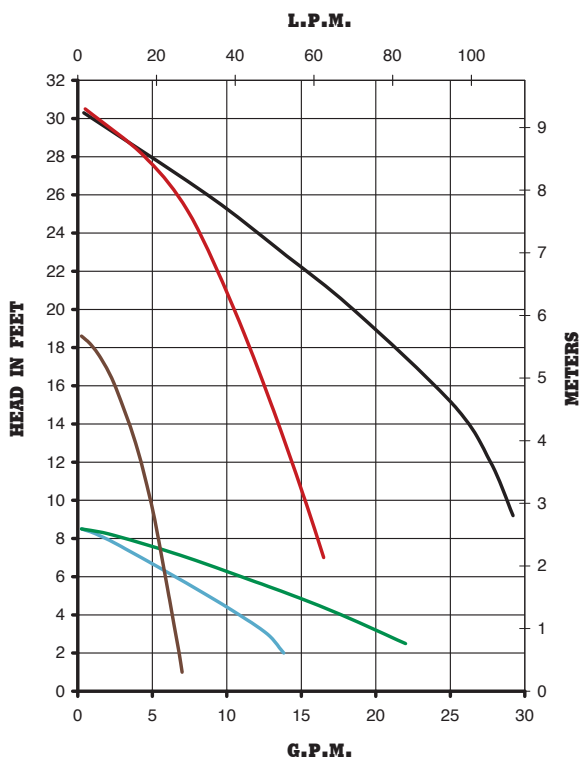
**MODEL 830-CI-T**



**MODEL 821-CI**



**MODEL 815-BR-C**



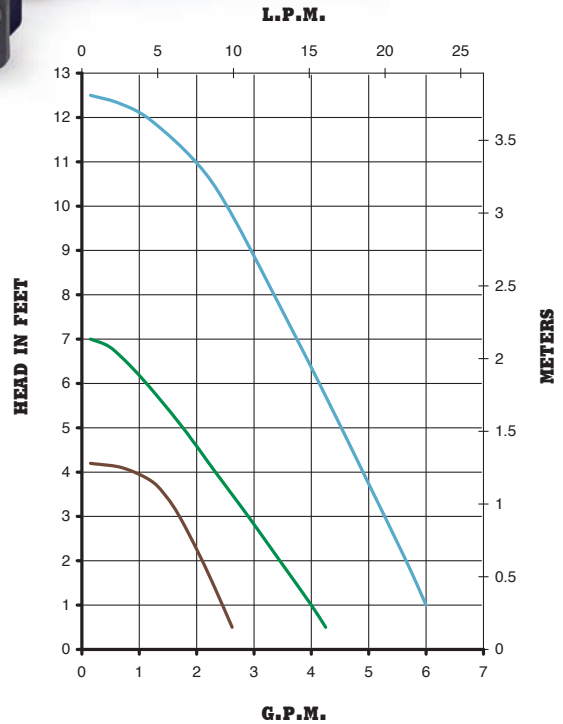
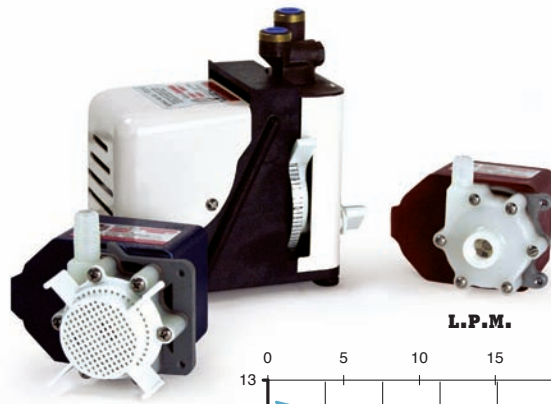
# 830, 821, 815

830, 821 815	830-CI	830-CI-T	821-CI	821-CI-T	815-PL	815-BR	815-PL-C	815-BR-C
<b>Max Flow</b>	15 GPM	29 GPM	22 GPM	14 GPM	7 GPM	7 GPM	8 GPM	8 GPM
<b>Max Head</b>	30.5 Feet	30.5 Feet	8.5 Feet	8.5 Feet	18.6 Feet	18.6 Feet	18.6 Feet	18.6 Feet
<b>Inlet</b>	Flange	3/4" FPT	Flange	3/4" FPT	1/2" MPT	1/2" MPT	3/8" FPT, 3/4" MPT	3/4" MPT
<b>Outlet</b>	Flange	3/4" FPT	Flange	3/4" FTP	1/2" MPT	1/2" MPT	1/2" MPT	1/2" MPT
<b>HP</b>	1/5	1/5	1/20	1/20	1/25	1/25	1/25	1/25
<b>RPM</b>	3450	3450	3450	3450	3450	3450	3450	3450
<b>Volts</b>	115 or 230	115 or 230	115 or 230	115 or 230	115 or 230	115 or 230	115 or 230	115 or 230
<b>Phase</b>	1	1	1	1	1	1	1	1
<b>Amps</b>	2.7/1.4	2.7/1.4	1.6 .8	1.6 .8	1.4 .7	1.4 .7	1.4 .7	1.4 .7
<b>Motor Type</b>	Air Cooled	Air Cooled	Air Cooled	Air Cooled	Air Cooled	Air Cooled	Air Cooled	Air Cooled
<b>Elec. Connect.</b>	Conduit Box	Conduit Box	Conduit Box	Conduit Box	Conduit Box	Conduit Box	Conduit Box	Conduit Box
<b>Max Int. Press.</b>	150 PSI	150 PSI	150 PSI	150 PSI	50 PSI	150 PSI	50 PSI	150 PSI
<b>Max Liquid Temp.</b>	250 F	250 F	250 F	250 F	250 F	250 F	250 F	250 F
<b>Weight Packed</b>	21 lbs.	18.5 lbs.	14 lbs.	11.5 lbs.	5 lbs.	6 lbs.	5 lbs.	6 lbs.
<b>Materials in Contact</b>	Cast Iron, 304 Stainless Steel, Ryton, Ceramic, Nitrile/Fibre Gasket *	Cast Iron, 304 Stainless Steel, Ryton, Ceramic, Nitrile/Fibre Gasket *	Cast Iron, 304 Stainless Steel, Ryton, Ceramic, Carbon, Nitrile/Fibre *	Cast Iron, 304 Stainless Steel, Ryton, Ceramic, Carbon, Nitrile/Fibre *	Polysulfi, Stainless Steel, Teflon, Silicone, Ryton/Teflon/Carbon	Bronze, Stainless Steel, Teflon, Silicone, Ryton/Teflon/Carbon	Polysulfi, Stainless Steel, Teflon, Silicone, Ryton/Teflon/Carbon **	Bronze, Stainless Steel, Teflon, Silicone, Ryton/Teflon/Carbon **

\* Available in Bronze  
 \*\* Available in Stainless Steel

# SEALED

SEALED & METERING	1C	1U
Max Flow	2.3 GPM	2.3 GPM
Max Head	4.2 Feet	4.2 Feet
Inlet	3/8" MPT	SCREEN
Outlet	1/4" MPT	1/4" MPT
HP	1/75	1/75
RPM	3200	3200
Volts	115 or 230	115 or 230
Phase	1	1
Amps	.75 .37	.75 .37
Motor Type	TE/SUB	SUB
Elec. Connect.	Cord	Cord
Max Int. Press.	20 PSI	20 PSI
Max Liquid Temp.	130 F	130 F
Weight Packed	3 lbs.	3 lbs.
Materials in Contact	Nylon, Stainless Steel, Viton, Cork & Neoprene Gaskets, Aluminum Bracket	Nylon, Delrin, Noryl, Stainless Steel, Viton, Cork & Neoprene

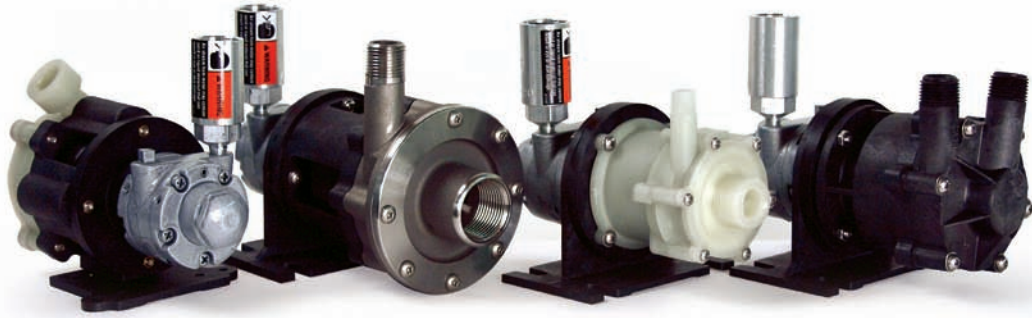


# & METERING

SEALED & METERING	1-1C	1-1U	2C	2U	210-5	210-10	212
Max Flow	4.5 GPM	4.5 GPM	6.5 GPM	6.5 GPM	1 to 115cc/min	5 to 350cc/min	50 to 1000cc/min
Max Head	7 Feet	7 Feet	12.5 Feet	12.5 Feet	160 PSI	160 PSI	60 PSI
Inlet	3/8" MPT	Screen	3/8" MPT	Screen	1/4" FPT	1/4" FPT	1/4" FPT
Outlet	1/4" MPT	1/4" MPT	1/4" MPT	1/4" MPT	1/4" MPT	1/4" MPT	1/4" FPT
HP	1/75	1/75	1/35	1/35	1/50	1/50	1/50
RPM	3200	3200	3200	3200	75	235	235
Volts	115 or 230	115 or 230	115 or 230	115 or 230	115 or 230	115 or 230	115 or 230
Phase	1	1	1	1	1	1	1
Amps	.75 .37	.75 .37	1.2 .60	1.2 .60	.8 .35	.8 .35	.8 .35
Motor Type	TE/SUB	SUB	TE/SUB	SUB	Air Cooled	Air Cooled	Air Cooled
Elec. Connect.	Cord	Cord	Cord	Cord	Cord	Cord	Cord
Max Int. Press.	20 PSI	20 PSI	20 PSI	20 PSI	160 PSI	160 PSI	90 PSI
Max Liquid Temp.	130 F	130 F	130 F	130 F	190 F	190 F	190 F
Weight Packed	3 lbs.	3 lbs.	4 lbs.	4 lbs.	5.5 lbs.	5.5 lbs.	5 lbs.
Materials in Contact	Nylon, Stainless Steel, Viton, Cork & Neoprene Gaskets, Aluminum Bracket	Nylon, Delrin, Noryl, Stainless Steel, Viton, Cork & Neoprene	Nylon, Stainless Steel, Viton, Cork & Neoprene Gaskets, Aluminum Bracket	Nylon, Delrin, Noryl, Stainless Steel, Viton, Cork & Neoprene	Ryton, Viton, Teflon, Ceramic	Ryton, Viton, Teflon, Ceramic	Ryton, Viton, Teflon, Ceramic

\*Available in Polysulfid and Bronze

\*\* Available in Polysulfid, Bronze, and Stainless Steel



# AIR MOTORS

AIR MOTORS	MDXT-3	MDXT-MT3	BC-2CP-MD	BC-3CP-MD	BC-4C-MD	TE-5S-MD
<b>Max Flow</b>	10 GPM	9 GPM	7.2 GPM	10.5 GPM	18 GPM	18 GPM
<b>Max Head</b>	29 Feet	28 Feet	40 Feet	42 Feet	50 Feet	50 Feet
<b>Inlet</b>	1/2" FPT	1/2" MPT	3/8"FTP & 3/4" MPT	3/4" FPT	1" FPT	1" FTP
<b>Outlet</b>	3/8" FPT	1/2" MPT	1/4" MPT	1/2" MPT	1/2" MPT	1/2" MPT
<b>HP</b>	1/8	1/8	1/8	1/8	1/8	1/8
<b>Max Air</b>	21 PSI	21 PSI	23 PSI	29 PSI	65 PSI	60 PSI
<b>CFM Required</b>	3	3	4	4	8	7

**MARCH MANUFACTURING, INC.**  
 1819 Pickwick Avenue  
 Glenview, Illinois 60026-1306

**P 847.729.5300**  
**F 847.729.7062**  
[WWW.MARCHPUMP.COM](http://WWW.MARCHPUMP.COM)



**SINCE 1954**

