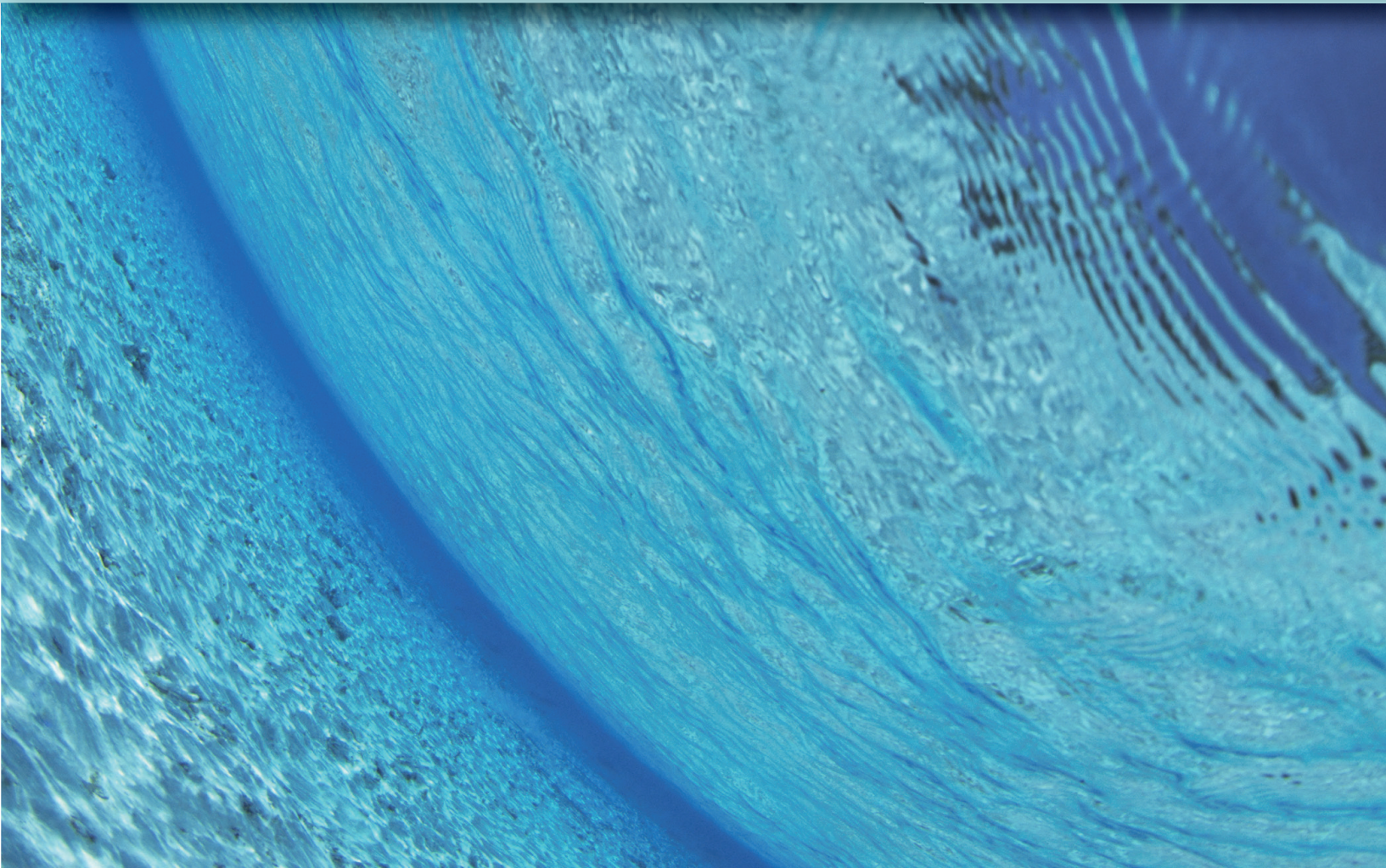




Marine Air Conditioner

2 0 1 6



# Easy installation, Easy use

## Features

Unified marine air conditioner with compact design and light weight. Easy to place with lower height.

Reverse cycle model equipped with air cooling and heating.

Non-freon gas.

Equipped with a lot of sensors for safety.

Compressor with the function of high-efficiency, low-vibration and low-electricity consumption.

Condenser coil with high-efficiency spiral double tube allows high-heat exchange rate.

Freely adjustable air outlet.

Rust resistant components by using stainless, aluminum and ABS plastic.

New collection of drain minimize over-flow caused by drain movement.

Smoother drain is available by placing the best location at installation.

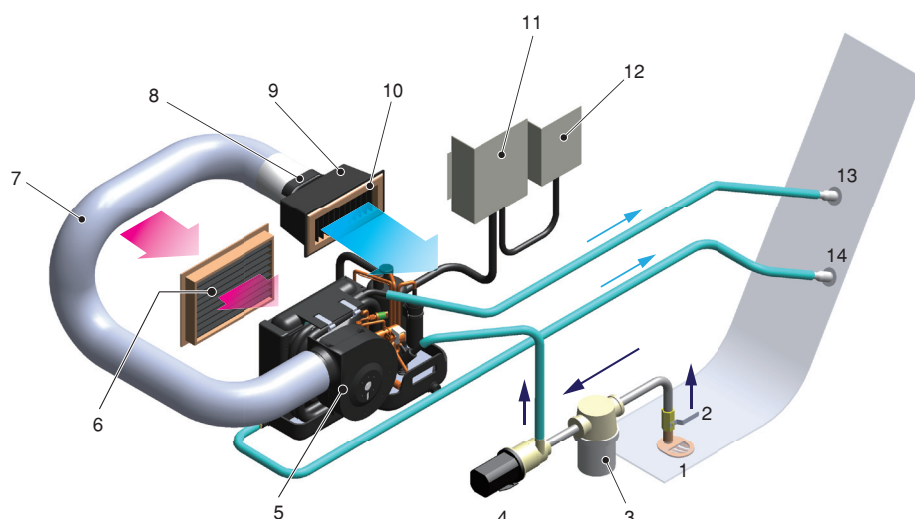
Expansion of marine air conditioner models and full of accessories.

## Controller



LCD display with back-light are supplied as standard for all models. It is high visible display and easy to operate with the bigger button. Also, the back-light color changes depending on the operate mode.

## Typical Installation



- |    |                           |
|----|---------------------------|
| 1  | Scoop Type Thru-Hull      |
| 2  | Ball Valve                |
| 3  | Sea Water Strainer        |
| 4  | Sea Water Pump            |
| 5  | A/C unit                  |
| 6  | Return Air Grille         |
| 7  | Flexible Duct             |
| 8  | Duct Ring                 |
| 9  | Transition Box            |
| 10 | Supply Air Grille         |
| 11 | Control Box               |
| 12 | Starting Booster (option) |
| 13 | Sea Water Outlet          |
| 14 | Drain Outlet              |

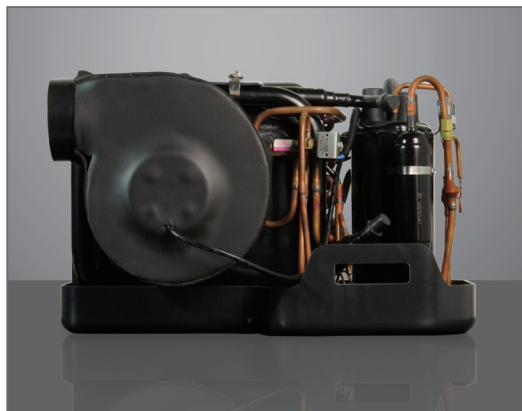
## AMP-3.5KE/KU



	AMP-3.5KE	AMP-3.5KU
Capacity	3500BTU/875kcal	
Voltage/Frequency	220V/50Hz	115V/60Hz
Rated Current(Cooling)	1.7A	4A
Rated Current(Heating)	2.3A	4.5A
Starting Current	6A	9A
Refrigerant	R134a	
Air Volume	250m <sup>3</sup> /h	
Duct Size	3in. dia.	
Seawater inlet/outlet	5/8" (16mm)	
Dimensions	W350mm D190mm H239mm	
Weight	15kg	

The specifications are subject to change without notice.

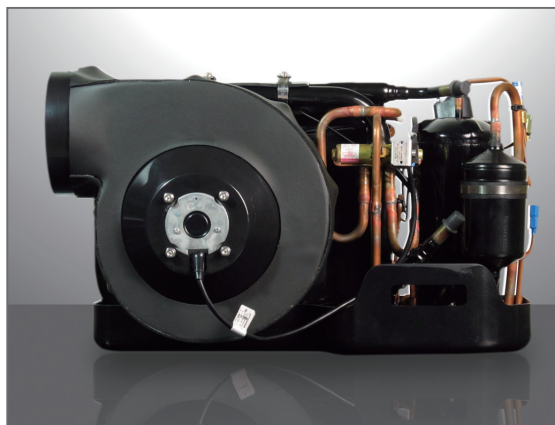
# AMP-8KE/KU AMP-10KE/KU AMP-12KE/KU



	AMP-8KE	AMP-8KU	AMP-10KE	AMP-10KU	AMP-12KE	AMP-12KU
Capacity	8000BTU/2000kcal		10000BTU/2500kcal		12000BTU/3000kcal	
Voltage/Frequency	220V/50Hz	115V/60Hz	220V/50Hz	115V/60Hz	220V/50Hz	115V/60Hz
Rated Current(Cooling)	3.1A	5.8A	3.8A	7.5A	4.2A	9.2A
Rated Current(Heating)	4.2A	7.3A	4.5A	8.7A	5.5A	10.8A
Starting Current	9A	17A	11A	21A	12A	27A
Refrigerant	R410a					
Air Volume	580m <sup>3</sup> /h					
Duct Size	4 in. dia.					
Seawater inlet/outlet	5/8" (16mm)					
Dimensions	W520mm D299mm H346mm					
Weight	22kg					

The specifications are subject to change without notice.

# AMP-16KE/KU

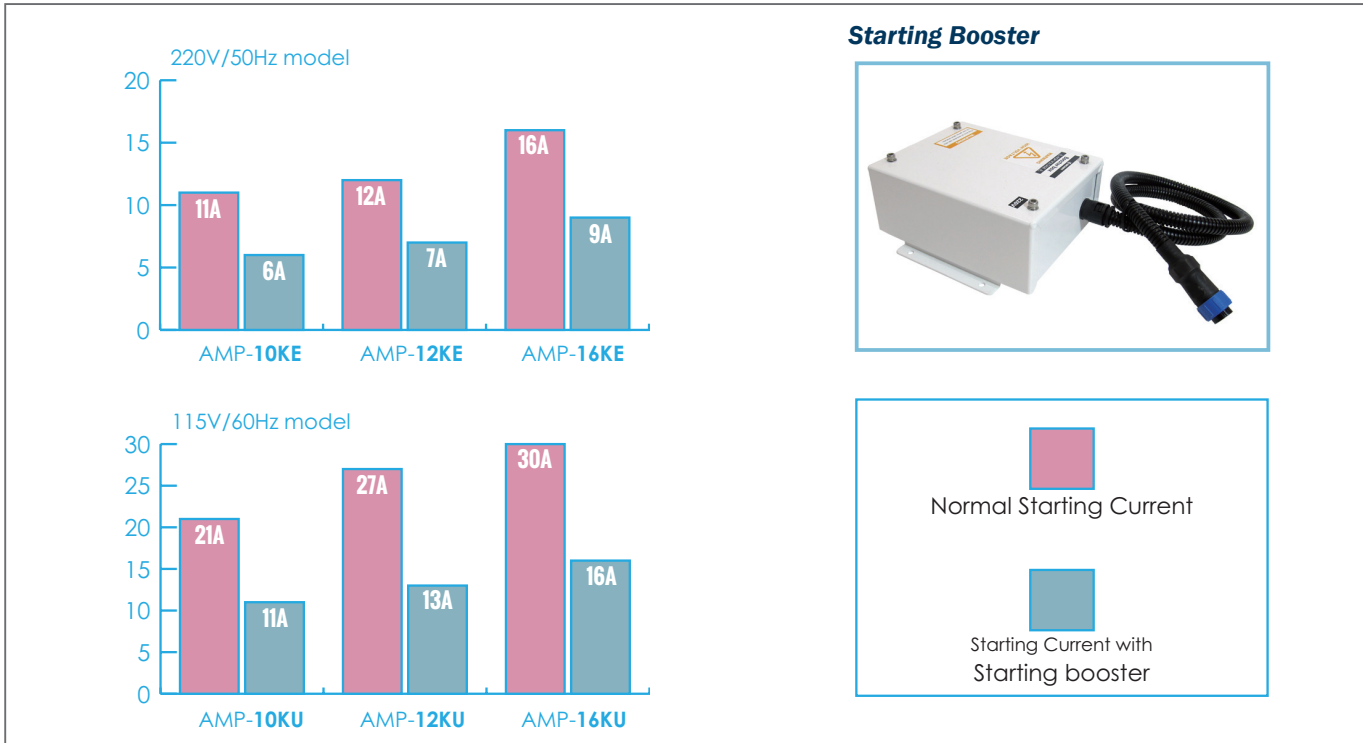


	AMP-16KE	AMP-16KU
Capacity	16000BTU/4000kcal	
Voltage/Frequency	220V/50Hz	115V/60Hz
Rated Current(Cooling)	5.8A	11.2A
Rated Current(Heating)	6.8A	13.8A
Starting Current	16A	30A
Refrigerant	R410a	
Air Volume	720m <sup>3</sup> /h	
Duct Size	6in. dia.	
Seawater inlet/outlet	5/8" (16mm)	
Dimensions	W575mm D389mm H369mm	W552mm D389mm H356mm
Weight	31kg	

The specifications are subject to change without notice.

# Marine Air Conditioner with Starting Booster

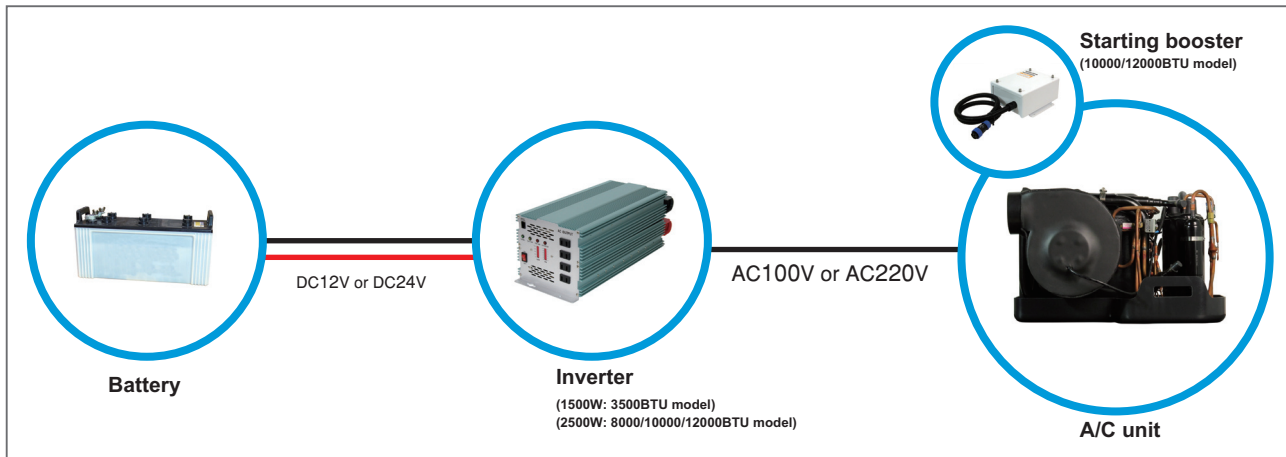
Starting current will be reduced by booster box (optional) connected to control box, which requires no special settings. This is a compressor soft-start device that will reduce the compressor starting current by approximately 1/2.



# Running Air Conditioners on Inverter Power

3500BTU model must be run with 1500W or above capacity Inverter while more than 2500W capacity Inverter must be used for 8000BTU model. However, these two models do not use starting booster.

10000BTU and 12000BTU model must be run with 2500W or above capacity Inverter with starting booster.



**Turtle Marine Inc.**

<http://turtle-marine.jp>

trade@turtle-marine.jp

938-7 Jikibagoh Seihi-cho Saikai-city Nagasaki, Zip Code : 850-3315 JAPAN

TEL : +81-95-929-5055 FAX : +81-95-929-5566